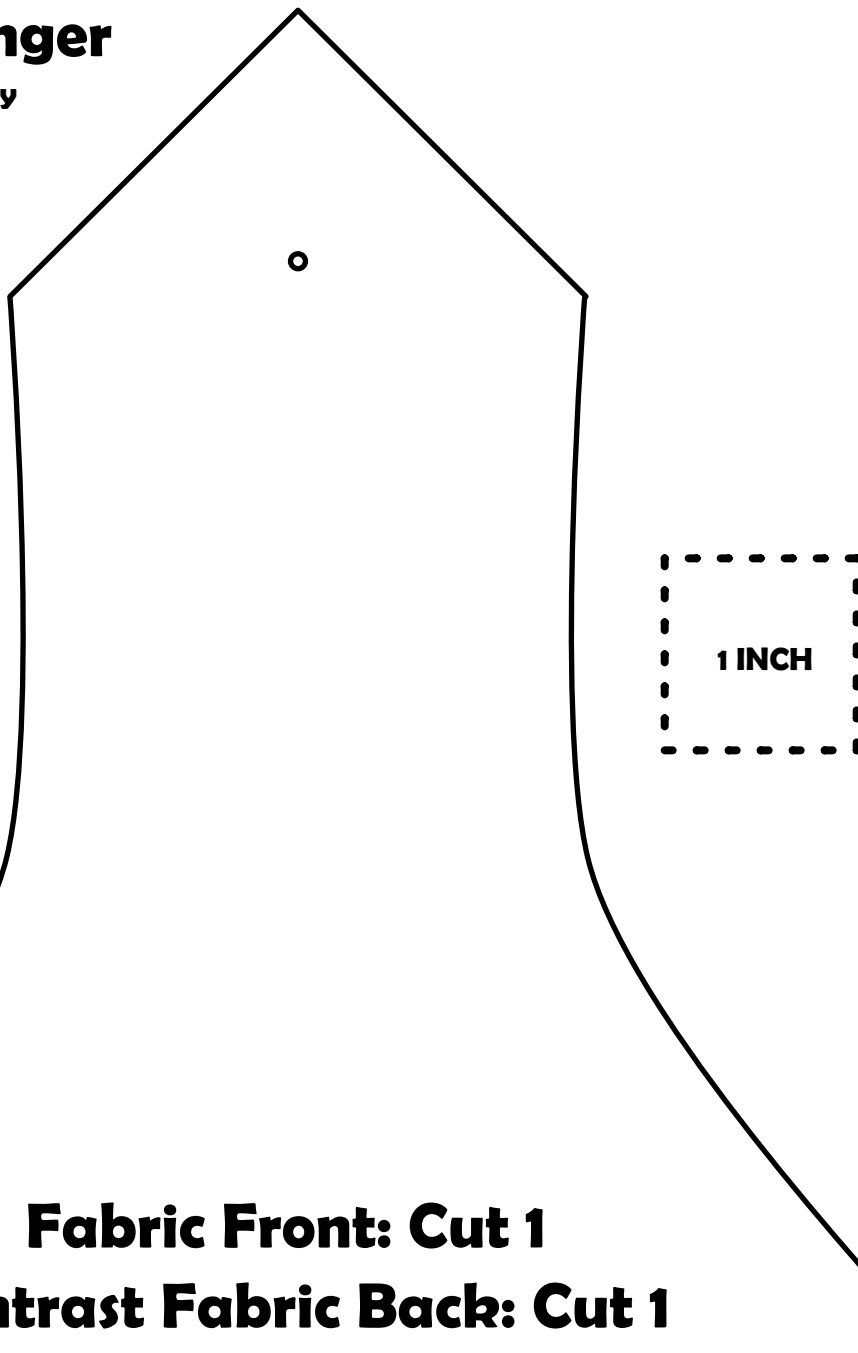


Dish Towel Hanger

Tutorial & Pattern designed by
Julia Schweri for Thermoweb

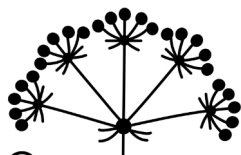


Fabric Front: Cut 1

Contrast Fabric Back: Cut 1

Fusible Fleece Interfacing: Cut 1

**(cut fusible 1/4" smaller around sides and top,
1/2" smaller on bottom)**



Inflorescence Designs

©2024 Julia Schweri www.inflorescencedesigns.com

* For personal use only