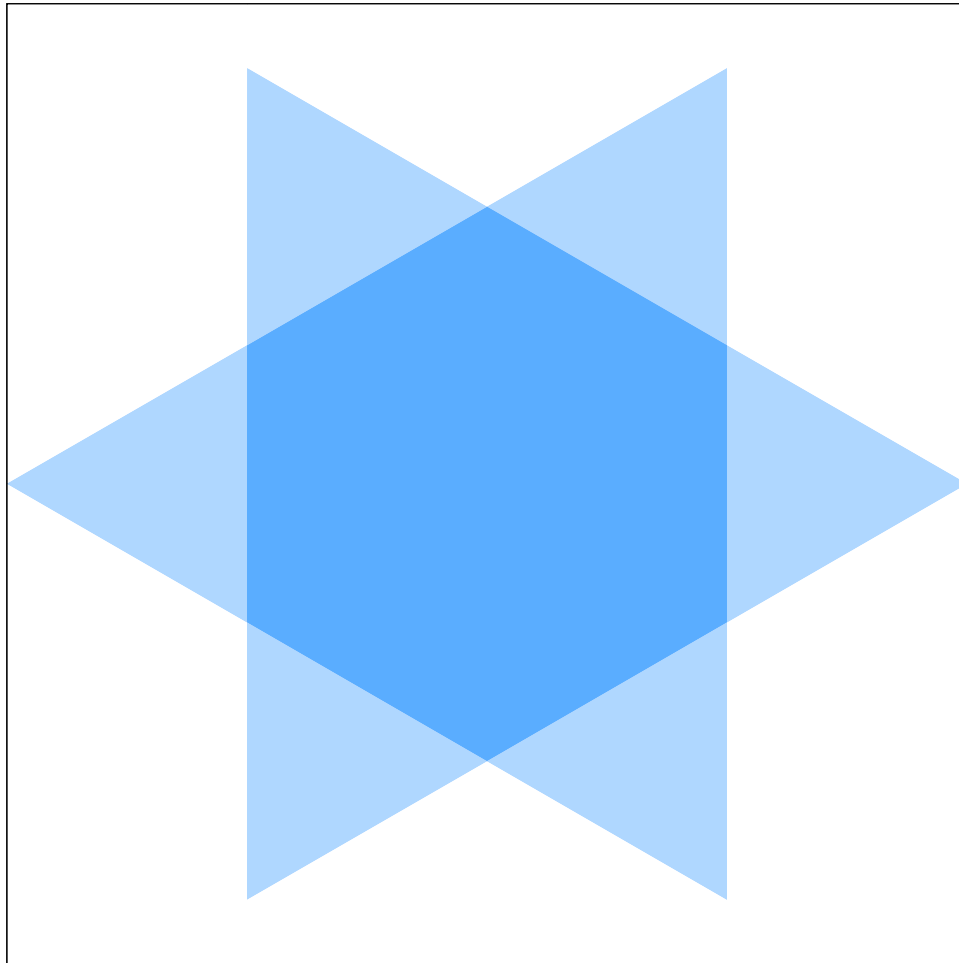
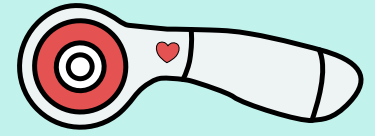


Inflorescence Designs



Falling Snow
Foundation Paper Piecing
Finished Block Size: 12" & 6"

Helpful Tips:

- When printing the pattern, make sure it is printing to "Actual Size" or with "no scaling". Check that the 1 INCH marker is true to size.
- Shorten your stitch length. This will make the paper easier to tear off and help prevent you pulling your stitches loose.
- Make sure you cover all of the seam allowances with your fabric.
- Use the color coded sections to help determine the color of each fabric section.
- Back stitch at the starts and ends of each line to keep your fabric secure while you remove the paper.
- Press each segment as you add it.
- Take your time, follow the directions, but most of all, have fun! Happy sewing!

Please do not copy or redistribute this pattern in any form. You may sell items made from this pattern on a small scale. They must be handmade by you, not mass produced. If you sell online, please include "*Pattern designed by Julia of Inflorescence Designs for Thermoweb*" within the description and if possible a link to the pattern.

Any questions? Feel free to contact me at inflorescencedesigns@yahoo.com

Pattern Assembly:

Join sections together in the following order:

1. A + B + C + D

