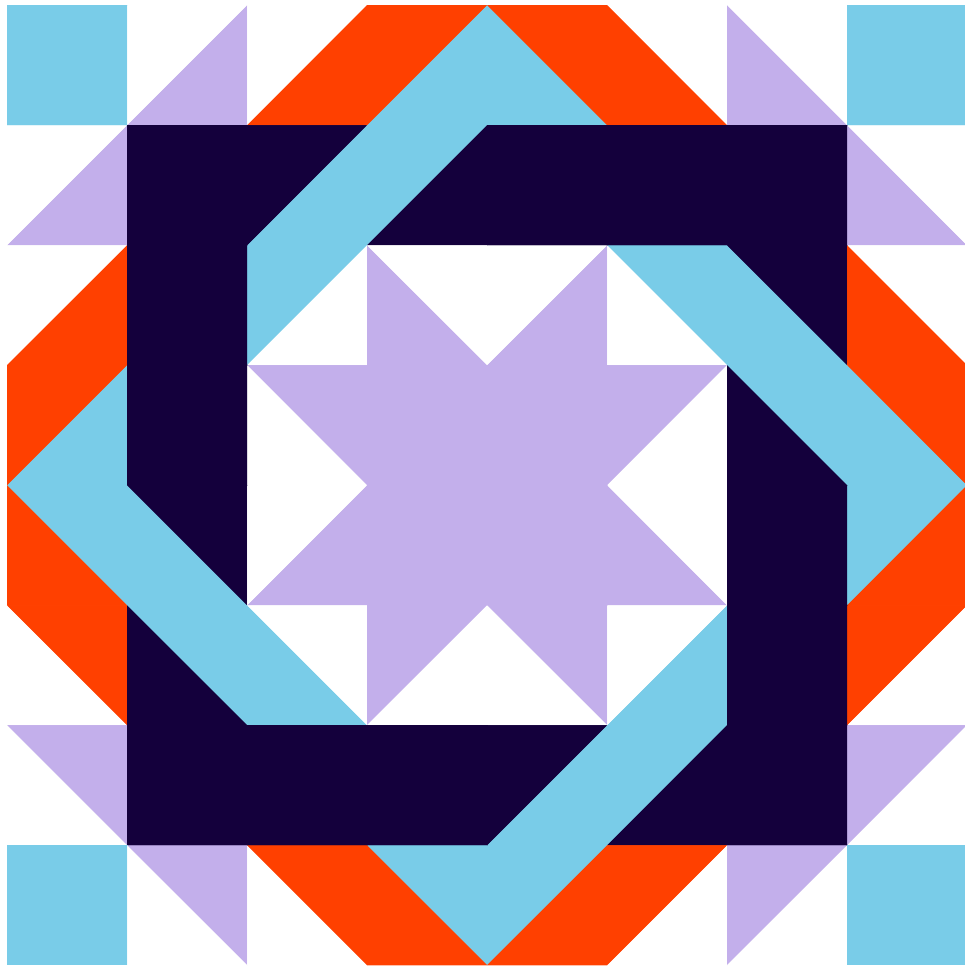
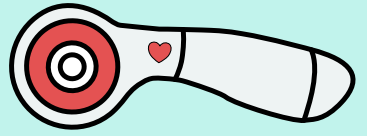


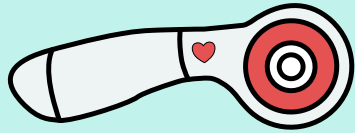
Inflorescence Designs



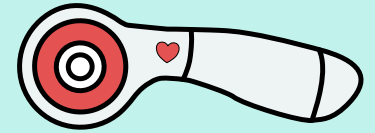
Interlocking

SIZE: 36"

Pattern and tutorial
designed by Julia Schweri
for Thermoweb



Supplies



Supplies: *Supplies are for ONE quilt block*

If making the sleeping bag as part of the BOM project, you will need to make 4 blocks total.

Purple Fabric:

- (4) 5" squares
- (2) 11 1/4" squares

Orange Fabric:

- (2) 11 1/4" squares

Light Blue Fabric:

- (4) 5" squares
- (3) 11 1/4" squares

Dark Blue Fabric:

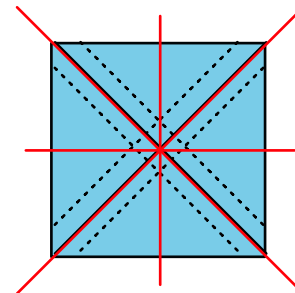
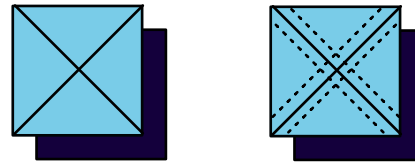
- (12) 5" squares
- (1) 11 1/4" square

White Fabric:

- (4) 11 1/4" squares

Instructions:

Layer the following 11 1/4" squares right sides together. Draw a line down both diagonals (solid lines). Then sew 1/4" down on each side (dashed lines). Trim according to the diagram below (red lines). Press each half square triangle and trim to 5".



White and Purple (2)

Orange and White (1)

Orange and Light Blue (1)

Dark Blue and Light Blue (1)

Light Blue and White (1) *For one quilt block we will only use 4 of these.*

For video help on making 8 and 4 half square triangles at a time check out this blog post and video:

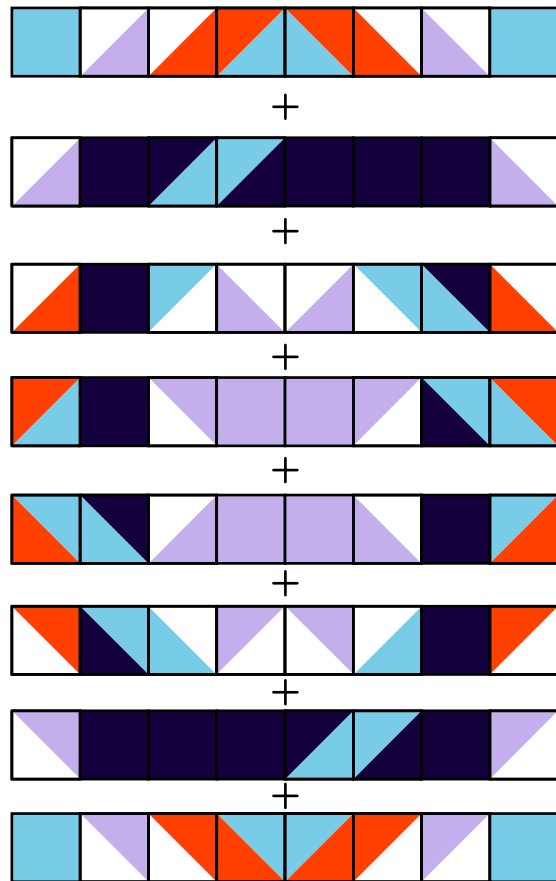
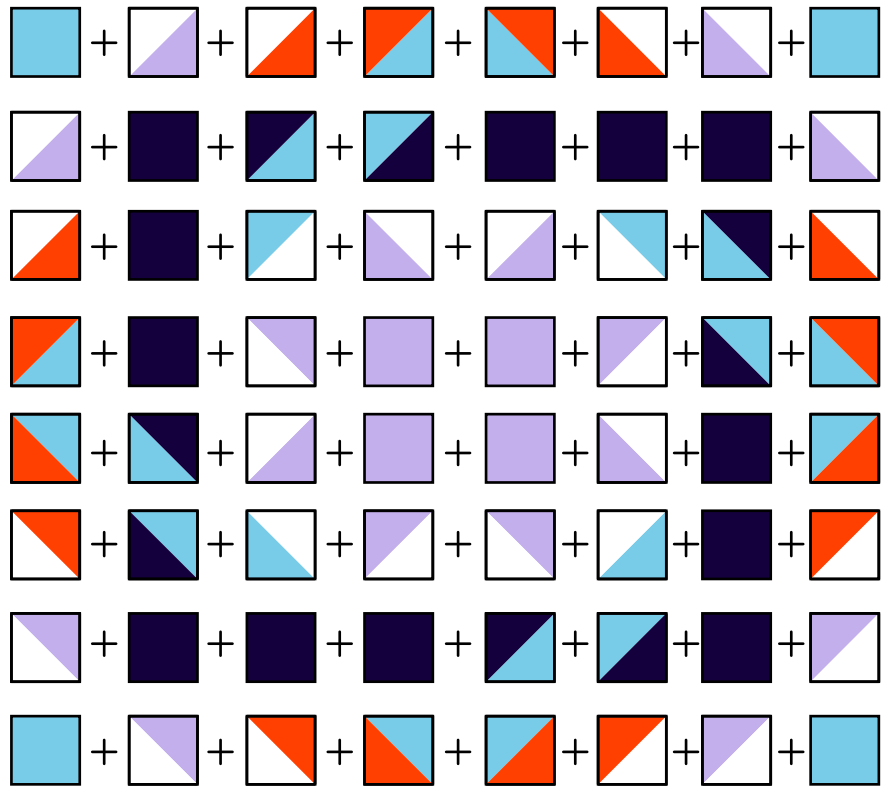
<https://blog.thermoweb.com/carpenter-star-quilt-using-spraybond-fabric-stiffener/>



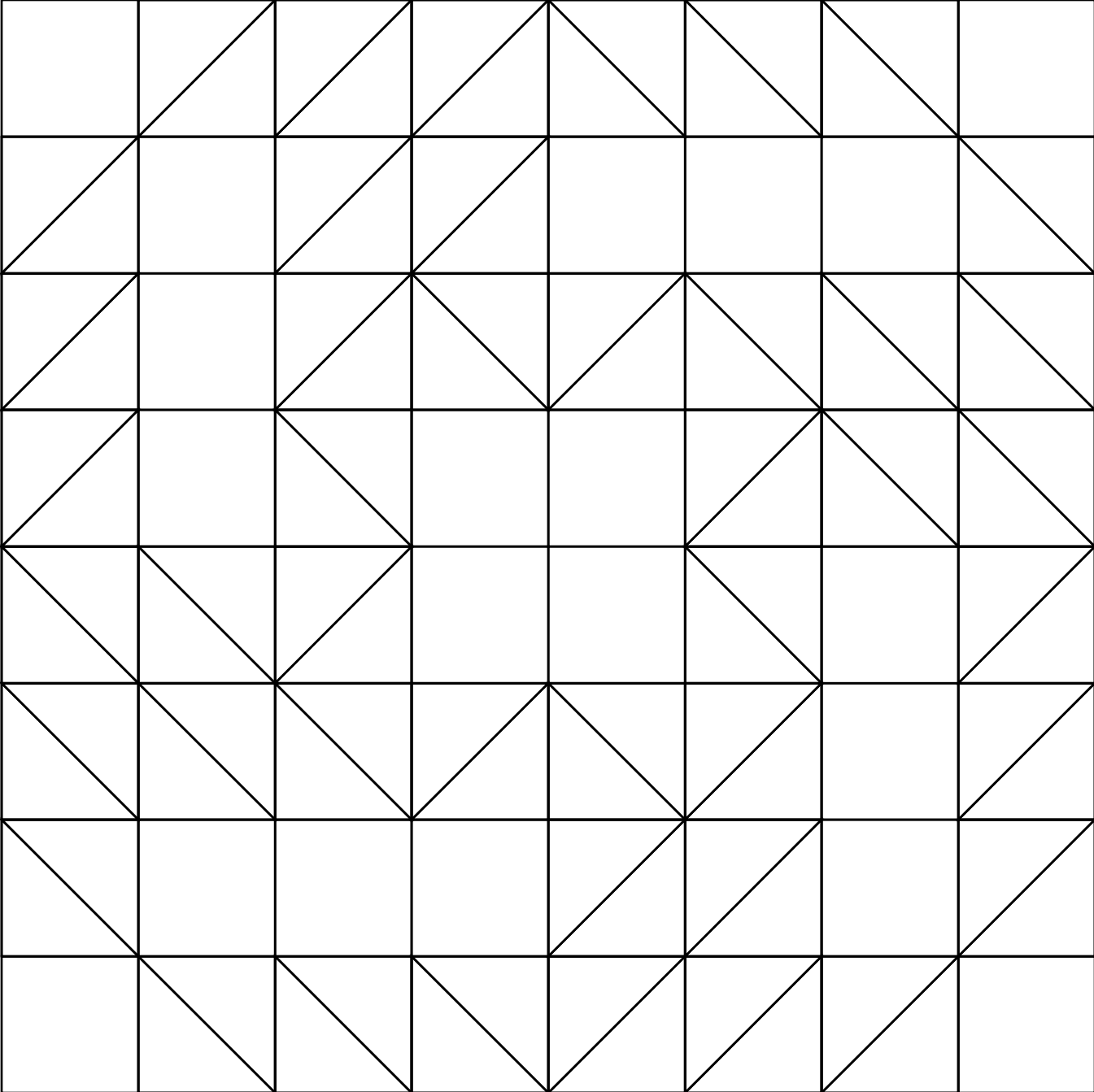
Inflorescence Designs

©2023 Julia Schweri www.inflorescencedesigns.com

* For personal use only



Coloring Page



Inflorescence Designs

©2023 Julia Scheri www.inflorescencedesigns.com

* For personal use only