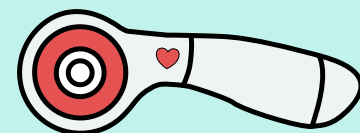


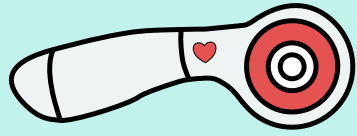
Inflorescence Designs



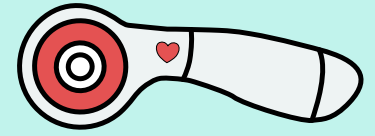
Rainbow Game Tiles

Pattern and tutorial
designed by Julia Schweri
for Thermoweb

www.inflorescencedesigns.com

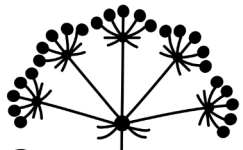
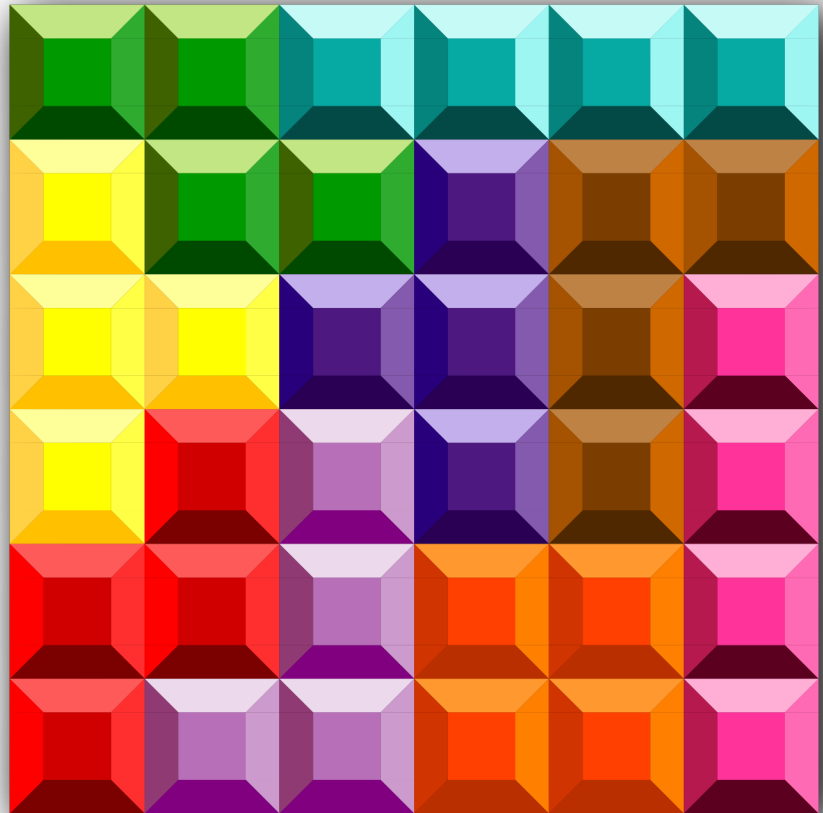


Supplies



Supplies:

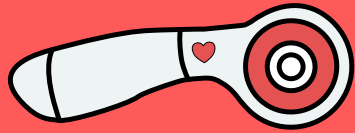
- HeatnBond Craft Weight Fusible Interfacing
- Scraps of rainbow fabric
- Backing fabric
- Basic sewing notions
- Oliso Iron
- Olfa cutting mat and rotary cutter



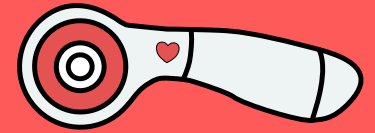
Inflorescence Designs

©2023 Julia Schweri www.inflorescencedesigns.com

* For personal use only

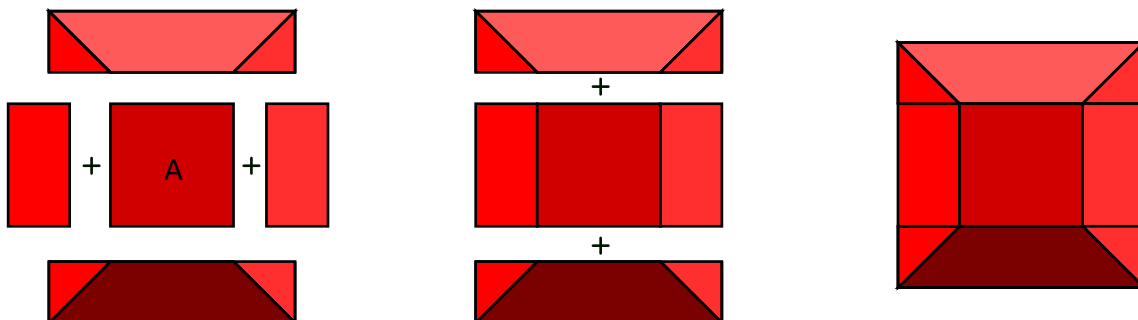
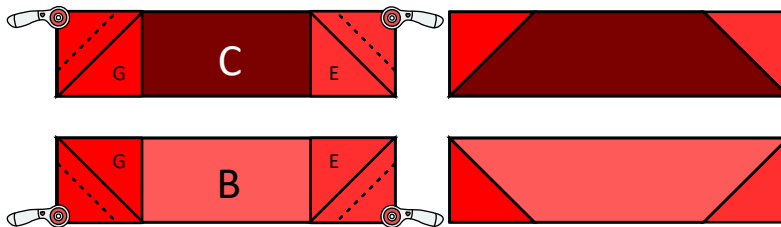
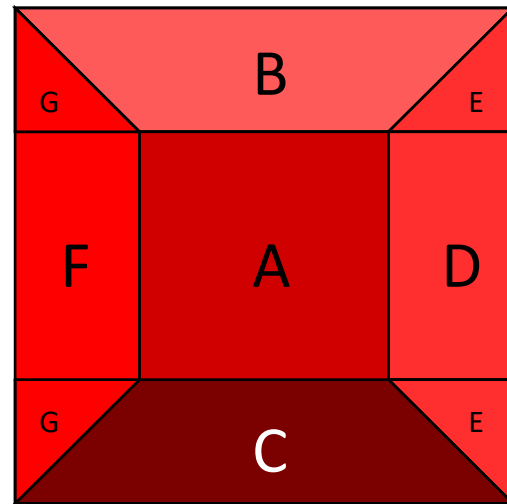


Game Block



Cutting

	4" Finished Medium	8" Finished Medium
A	(1) 2 1/2" square	(1) 4 1/2" squares
	Light	Light
B	(1) 1 1/2" x 4 1/2"	(1) 2 1/2" x 8 1/2"
	Dark	Dark
C	(1) 1 1/2" x 4 1/2"	(1) 2 1/2" x 8 1/2"
	Medium Light	Medium Light
D	(1) 1 1/2" x 2 1/2"	(1) 2 1/2" x 4 1/2"
E	(2) 1 1/2" square	(2) 2 1/2" squares
	Medium Dark	Medium Dark
F	(1) 1 1/2" x 2 1/2"	(1) 2 1/2" x 4 1/2"
G	(2) 1 1/2" square	(2) 2 1/2" squares



Inflorescence Designs

©2022 Julia Schweri www.inflorescencedesigns.com

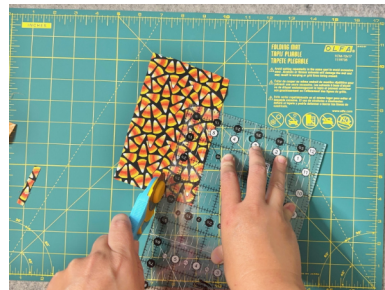
* For personal use only

Rainbow Game Tiles

Step 1: Assemble your scraps. Pay close attention to the tone of the colors. Use a black and white filter to help determine the lightness and darkness.



Step 2: Cut your pieces according to the pattern.



Step 3: Arrange your pieces and begin assembly.



Step 4: Sew your blocks together.



Step 5: Sew your blocks according to the shape you are doing. Here a square block was created.



Step 6: Fuse the craft weight fusible interfacing to the wrong side of your blocks.



Rainbow Game Tiles

Step 7: Layer your backing, right sides together, to your game piece block. Sew all the way around with a 1/4" seam. Leave a 2-3" opening for turning.



Step 8: Trim the edges and cut the corners. If your game piece has inside corners make sure to snip carefully in those corners as well so that it will lay nice. Try not to cut through your seam.



Step 9: Turn right side out and press, turning under the opening.



Step 10: Top stitch around to close the opening.



Finished!

