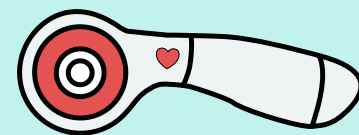
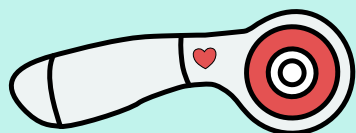


Inflorescence Designs

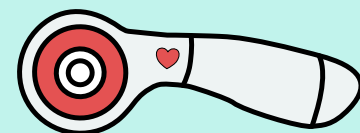


Quilt Block Bag

Pattern and tutorial
designed by Julia Schweri
for Thermoweb



Supplies



Supplies:

- (1) 12 1/2" quilt block of choice
- (1) 12 1/2" x 3 1/2" fabric piece (to match background of quilt block)
- (1) 12 1/2" x 15 1/2" fabric for back of outer bag
- (2) 12 1/2" x 15 1/2" canvas fabric for lining
- (2) 12" x 15" Thermoweb Fusible Fleece
- (1) 1 1/2" x 19" cotton webbing for handle
- Basic Sewing Notions



Thermoweb Craft Room:

<https://www.facebook.com/groups/thermowebcraftroom>

There is a YouTube video tutorial that shows the drop in liner method. This tutorial uses different measurements but the skills needed are the same.

Find it here: https://youtu.be/X_Kv2JR0kAI



Inflorescence Designs

©2023 Julia Schveri www.inflorescencedesigns.com

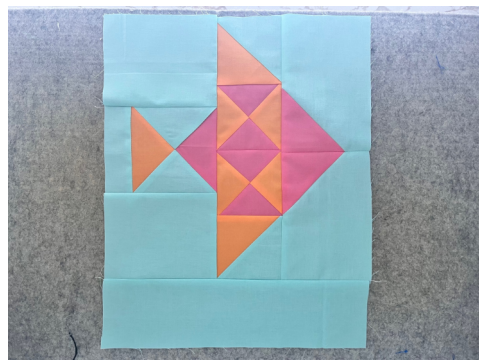
* For personal use only

Quilt Block Bag

Step 1: Make a 12 1/2" quilt block. The block used in this tutorial is from Thermoweb's Block of the month, July 2023. You can find the link to the Facebook group on the supplies page.

Patterns and other FREE tutorials are located in the files section.

Step 2: Add the 3 1/2" x 12 1/2" fabric strip to the bottom of your block.



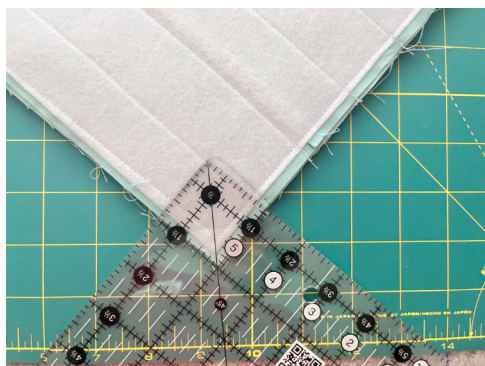
Step 3: Adhere the fusible fleece to the wrong side of your quilt block piece and back of the bag piece.



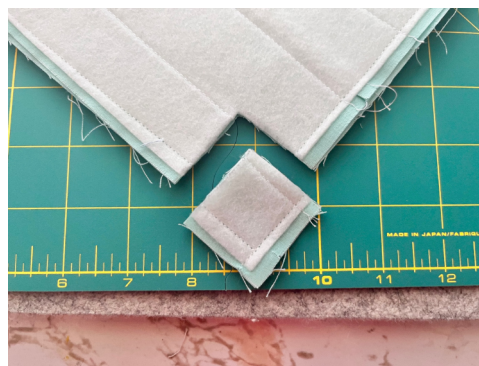
Step 4: Quilt both the front and back as desired. Next, sew the sides and bottom together using a 3/8" seam.



Step 5: Measure 1 1/2" square on the bottom corners of both the front and back pieces. Measure from the raw edge.



Step 6: Trim the squares out.



Quilt Block Bag

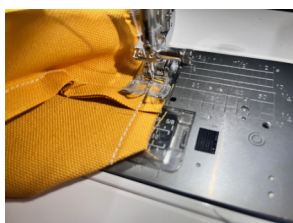
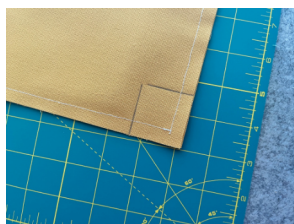
Step 7: Squeeze the cut corner together, nesting the side and bottom seam. Sew across with a 3/8" seam. Turn the bag right side out.



Step 8: For the lining, sew one side and bottom edge closed. On the other side, sew but leave an opening about 4-5" in the center for turning.



Step 9: Repeat steps 5-7 with the lining piece but **keep the lining inside out**.



Step 10: Baste the handle to the front of the bag. The handle placement is centered over each of the side seams. Baste 1/4" from the raw edge.



Step 11: Insert the bag front into the lining and align the top raw edges. Sew around the bag with a 3/8" seam. I suggest back stitching over the handles.



Step 12: Pull the outer bag piece through the opening in the lining.



Quilt Block Bag

Step 13: Sew the opening closed. Then, push the lining down into the bag and sew a top stitch around the top of the bag.



Finished!



Thank You!



Hello! Thank you for downloading my pattern. My goal is to live life joyfully by creating everyday. I hope you can do the same.

~Julia Scheri

Follow me on Social Media:



@inflorescensedesigns



Inflorescence Designs



Inflorescence Designs

www.inflorescencedesigns.com