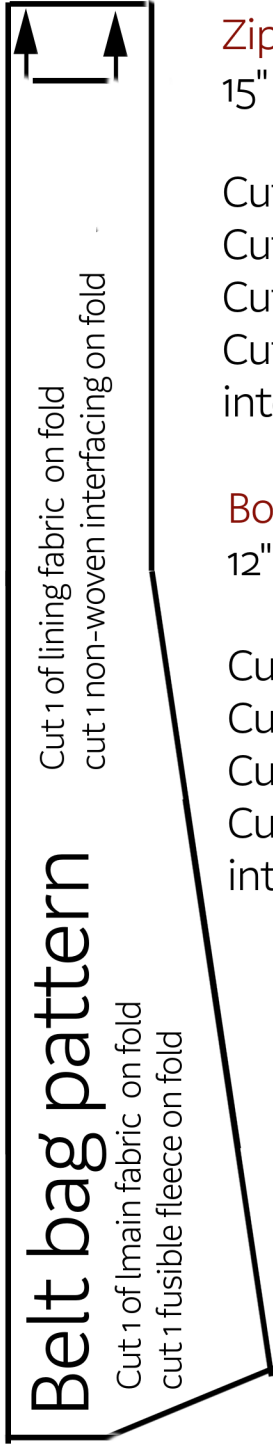


1" test square



Zipper strip  
15" x 1.25 "

Cut 1 of main fabric  
Cut 1 of lining fabric  
Cut 1 of fusible fleece  
Cut 1 of non-woven interfacing

Bottom strip  
12" x 2.5 "

Cut 1 of main fabric  
Cut 1 of lining fabric  
Cut 1 of fusible fleece  
Cut 1 of non-woven interfacing

1" test  
square

## Belt bag pattern

Cut 1 of main fabric (front)  
cut 3 of lining fabric  
cut 1 fusible fleece  
cut 2 non-woven interfacing

## Belt bag pattern top back

Cut 1 of main fabric  
Cut 1 of fusible fleece  
Cut 1 of lining fabric  
cut 1 non-woven interfacing

## Belt bag pattern bottom back

Cut 1 of main fabric  
Cut 1 of fusible fleece  
Cut 1 of lining fabric  
cut 1 non-woven interfacing