

# PAPER DOLLS SEW-ALONG

## #1



**The Red Boot Quilt Company**

# \* therm.o.web

adhesives, interfacings and more...



**The Red Boot Quilt Company**

## **BEFORE THE FUN BEGINS**

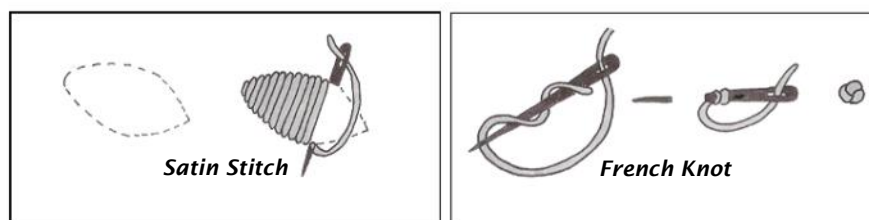
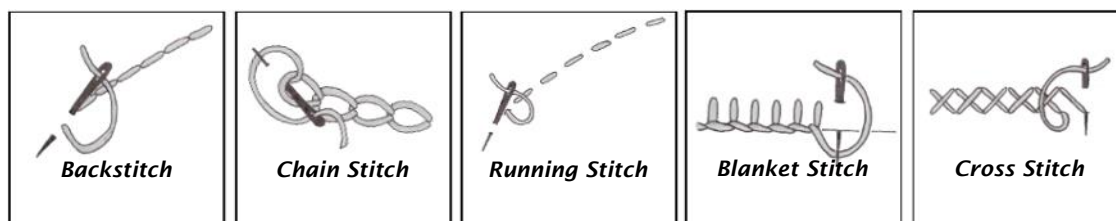
- ◆ Please read all instructions before you begin.
- ◆ Abbreviations. "WOF" = 'width of the fabric'.
- ◆ **Requirements are based on fabric 115cm (44in) wide unless otherwise stated. Fabric requirements may differ from person to person due to cutting methods. If in doubt it is a good idea to purchase a little extra fabric.**
- ◆ Fusible webbing requirements will vary greatly between products and projects; assume you will need a lot and go from there!
- ◆ 1/4in seam allowances are used throughout unless otherwise stated.
- ◆ Pre-washed 100% cotton fabrics are recommended.
- ◆ Please refer to the photo of the project and the quilt diagrams to help with colour choices and layout.
- ◆ **I would recommend using an appliqué mat with all but the most simple appliqué shapes.**
- ◆ Our patterns are proof-read and made by our lovely testers but sometimes mistakes do slip by us. Please let us know if you come across an error so we can correct it.
- ◆ This design and its instructions, diagrams, and templates are protected by copyright. They may not be reproduced by any process. The instructions and information contained in this pattern are given in good faith, but no guarantee is given due to the fact we have no control over the techniques and materials used. This pattern is not intended to replace a class.

## **A NOTE ABOUT BUTTONS**

- ◆ I like to use buttons on my projects but they aren't suitable for children under three (3) years of age due to them being a choking hazard. Replace buttons with appliqué or embroidery when you are making the project.
- ◆ Safety eyes are available from all good craft stores. Always follow the manufacturer's instructions.

## **IMPORTANT! HOW TO PRINT TEMPLATES FROM PDF PATTERNS**

- ◆ All templates are provided at their full size. Ensure your printer is set to print at 100% and deselect the scaling and cropping options. Ensure you deselect the option that says "print to printer margins".
- ◆ Some templates may be divided into two or more sections and will need to be joined to make the complete template. Simply match the shapes along the dashed or dotted lines as marked on the template, then use adhesive tape to stick them together. Occasionally a shape will distort a tiny bit in the printing process, simply adjust where necessary.
- ◆ All of our patterns are test printed multiple times before release. Very occasionally a PDF template will print with a **black background** due to differences between the various apps and devices we use. This can be solved in most instances by saving the PDF to your hard-drive, then re-opening the file using a PDF reader (not your browser). Please message me at [redbootquilts@bigpond.com](mailto:redbootquilts@bigpond.com) if you continue to have difficulties.



# **PAPER DOLLS SEW-ALONG—#1**

## **Welcome to the First Instalment of our Paper Doll Sew-Along**

- ◆ Please read the instructions before you begin.
- ◆ Each block measures approx. 8in x 12in.
- ◆ The quilt will measure approx. 61 1/2in x 66 1/2in when finished.
- ◆ Supplement the fabrics in the requirements list with fabrics from your stash to add visual interest to your quilt.
- ◆ I haven't decided on a border as yet. Fabric requirements given for the border are an estimate only and based on a plain (non-pieced) border. This may change!

## **What You Will Need to Make the Quilt**

- ◆ (35) 8in x 12in rectangles of fabric for the background of the paper doll blocks.  
*Choose a selection of complimentary solid and print fabrics. Please refer to the Colour Map before you begin. I've cut the following -*
  - (8) from white & black text print fabric,
  - (5) from yellow fabric,
  - (4) from purple fabric,
  - (4) from orange fabric,
  - (3) from blue fabric,
  - (2) from red fabric,
  - (4) from aqua fabric,
  - (2) from green fabric, and
  - (3) from pink fabric.
- ◆ You will need an assortment of solid skin-toned fabrics for the paper dolls.  
*The amount of fabric you will need for each doll will vary between the blocks—(4) fat quarters of solid skin-toned fabrics will give you plenty to begin with.*
- ◆ You will need an assortment of fabric scraps for the hair, clothing, and other applique shapes in every colour of the rainbow.  
*Choose a selection of solid and print fabrics that compliment and also contrast with the background fabrics.*
- ◆ A quantity of lightweight fusible webbing—the amounts needed will differ from product to product depending on it's width. I use and recommend [HeatnBond Lite](#) from [Thermoweb](#).  
*If you prefer to purchase your fusible webbing in one go, I would recommend purchasing (2) metres or (2 1/4 yards) to begin (estimate only).*
- ◆ 1m (1 1/8 yards) of complimentary fabric for a plain (non-pieced) border (*estimate only*).
- ◆ 45cm (1/2 yard) of complimentary fabric for the binding
- ◆ (30) pairs of small black buttons for eyes (*optional*)
- ◆ Stranded embroidery thread for the facial features and stitched detail
- ◆ Matching thread to suit your favourite appliqué stitching method
- ◆ Appliqué mat or Teflon sheet (*optional, but highly recommended*)
- ◆ A piece of wadding (batting) measuring at least 67 1/2in x 72 1/2in
- ◆ 3.7m (4 1/8 yards) of 42in wide complimentary backing fabric
- ◆ General sewing supplies

### **A Note About Buttons**

*I like to use buttons on my projects but they aren't suitable for children under three (3) years of age due to them being a choking hazard.*

*Replace buttons with applique or embroidery when you are making the quilt.*



# PAPER DOLLS SEW-ALONG

## COLOUR MAP FOR THE CENTRE OF THE QUILT

© Antonie Alexander, The Red Boot Quilt Company 2020

<i>Block 1</i>	<i>Block 2</i>	<i>Block 3</i>	<i>Block 4</i>	<i>Block 5</i>	<i>Block 6</i>	<i>Block 7</i>
<i>Block 8</i>	<i>Block 9</i>	<i>Block 10</i>	<i>Block 11</i>	<i>Block 12</i>	<i>Block 13</i>	<i>Block 14</i>
<i>Block 15</i>	<i>Block 16</i>	<i>Block 17</i>	<i>Block 18</i>	<i>Block 19</i>	<i>Block 20</i>	<i>Block 21</i>
<i>Block 22</i>	<i>Block 23</i>	<i>Block 24</i>	<i>Block 25</i>	<i>Block 26</i>	<i>Block 27</i>	<i>Block 28</i>
<i>Block 29</i>	<i>Block 30</i>	<i>Block 31</i>	<i>Block 32</i>	<i>Block 33</i>	<i>Block 34</i>	<i>Block 35</i>

This is a free pattern provided by  
© The Red Boot Quilt Company 2020  
STRICTLY NOT FOR RESALE OR DISTRIBUTION

 **therm·o·web**  
adhesives, interfacing and more...

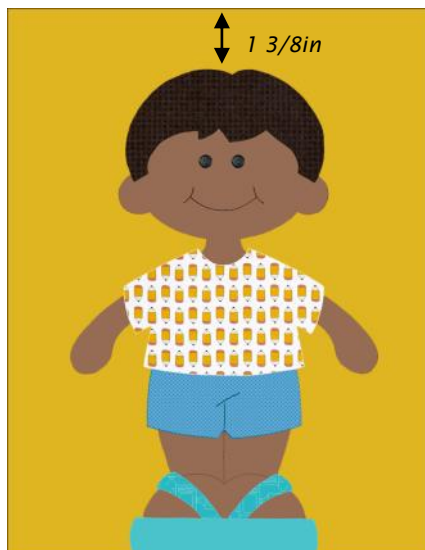
## How to Make Blocks 1 and 2

1. Trim the background blocks, where necessary, to measure 8in x 12in.
2. Use a pencil to trace the required appliqué shapes for both dolls onto the paper side of the fusible webbing—leave approx. 1/2in between each shape. When you have finished tracing, roughly cut out the individual shapes 1/4in outside the traced lines.
3. Fuse the appliqué shapes to the wrong side of the fabrics you have chosen for the project following the manufacturer's instructions. Cut the shapes out carefully on the lines when cool to the touch. Remove the backing paper from the appliqué shapes as you need them.
4. Use the templates and Diagram 1 as a guide to centre and fuse the appliqué shapes to the (2) 8in x 12in background blocks you have chosen for the quilt. The bottom raw edge of the appliqué shapes (shoes) align with the bottom raw edge of the background blocks.
5. Stitch around the appliqué shapes using your favourite method. I stitched around my shapes using machine blanket stitch and matching thread. Use a light, sharp pencil to draw the features on the dolls, then backstitch using two strands of contrasting embroidery thread.

I always sew buttons to my blocks before quilting because I don't like my character's to be without eyes. Most quilters prefer to sew the buttons to the quilt AFTER it is quilted.

6. Set the blocks aside.

### Diagram 1 ▼



*You don't need to blanket stitch the bottom edge of the shoes.*

- The top of the girl paper doll's heads (crown of hair) are positioned approx. 1 7/8in down from the top of each block. The shoes are fused last, overlapping the legs where necessary to fit.
- The top of the boy paper doll's heads (crown of hair) are positioned approx. 1 3/8in down from the top of each block. The shoes are fused last, overlapping the legs where necessary to fit.
- Embellish the paper dolls as you wish. Sew a French Knot to their ears for earrings, stitch a bracelet, add buttons to their clothing. The possibilities are endless. Most of all have fun!

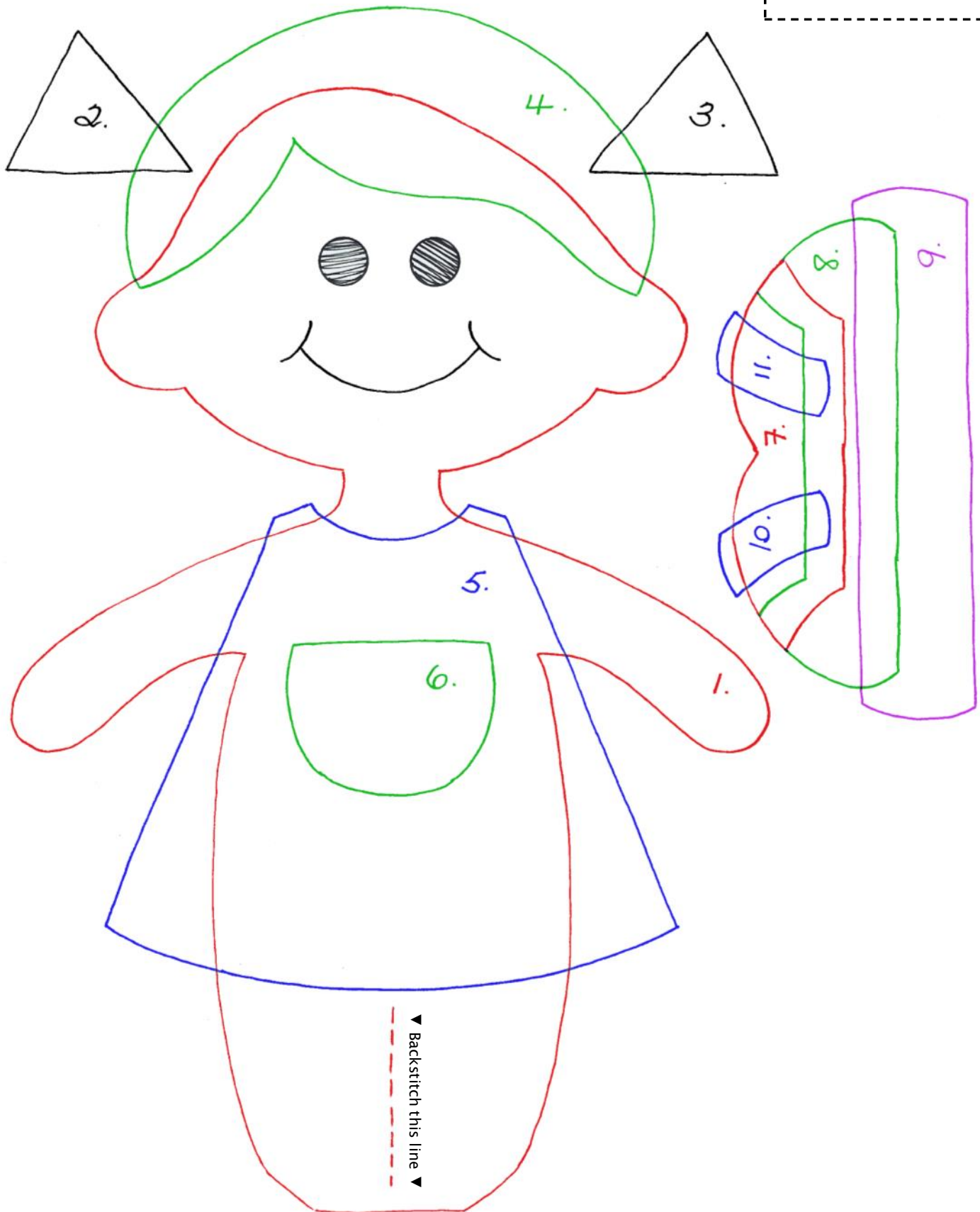
This is a free pattern provided by  
© The Red Boot Quilt Company 2020  
STRICTLY NOT FOR RESALE OR DISTRIBUTION

 **therm.o.web**  
adhesives, interfacing and more...

# PAPER DOLLS—BLOCK 1

© Antonie Alexander, The Red Boot Quilt Company 2020

**Tip!**  
The numbers represent the order in which the appliqué shapes are fused together.



# PAPER DOLLS—BLOCK 2

© Antonie Alexander, The Red Boot Quilt Company 2020

**Tip!**  
Use a lightbox or sunny window to help trace the features on the appliqué shapes before you fuse them to the background block.

