

Just Let Me Quilt

...patterns by Carol Swift

©2016 - Carol Swift - All Rights Reserved - Just Let Me Quilt
Pattern for personal and non-profit use only.
Not for sale or distribution.
<http://justletmequilt.com> - sewswift6@gmail.com

BOO TO YOU, TOO!



Finished size: 33" x 42½"

Directions are given using fabrics from quilt shown above. Replace pattern designs and colors with your choice of fabrics. All seams are sewn at 1/4" wide

What you'll need:

Therm O Web Heat N Bond EZ Print Lite sheets, 8½" x 11"
Therm O Web Spray n Bond
Heat N Bond Fusible Interfacing - Light Weight
Therm O Web Fabric Fuse Adhesive
iCraft® Deco Foil™ Sheets
iCraft® Deco Foil™ Liquid Adhesive
Therm O Web Stitch n Sew Fleece Sew-in High Loft/Batting
Iron
Fabric/batting
Embroidery thread
Button

Fabric yardage:

1/4 yard white
1 yard orange
1 yard black print
1/8 yard black

Cutting instructions:

Cut 1 - 13½" x 23" Center Panel
Cut 2 - 1½" x 23" Border A left and right sides
Cut 2 - 1½" x 15½" Border A top and bottom
Cut 2 - 3½" x 25" Border B left and right sides
Cut 2 - 3½" x 21½" Border B top and bottom
Cut 2 - 4½" x 31" Border C left and right sides
Cut 2 - 4½" x 29½" Border C top and bottom
Cut 2 - 2½" x 39" Border D left and right sides
Cut 2 - 2½" x 33½" Border D top and bottom
Cut 4 - 2½" x WOF (remove selvages) for binding
1 yard fabric for backing (you'll have a little extra, but this allows for trimming)
Stitch n Sew Fleece Sew-in High Loft or batting



Sewing instructions:

Step 1: Sew $1\frac{1}{2}$ " x 23" Border A left and right sides to panel. Next, sew $1\frac{1}{2}$ " x $15\frac{1}{2}$ " Border A to top and bottom of panel.



Step 2: Sew $3\frac{1}{2}$ " x 25" Border B left and right sides to Border A. Next, sew $3\frac{1}{2}$ " x $21\frac{1}{2}$ " Border B top and bottom to Border A.



Step 3: Sew $4\frac{1}{2}$ " x 31" Border C left and right sides to Border B. Next, sew $4\frac{1}{2}$ " x $29\frac{1}{2}$ " Border C top and bottom to Border B.



Step 4: Sew $2\frac{1}{2}$ " x 39" Border D left and right sides to Border C. Next, sew $2\frac{1}{2}$ " x $33\frac{1}{2}$ " Border D top and bottom to Border C.



Step 5: Using the templates, trace spider webs in each corner of Border C. Embroider using your favorite stitch.



Step 6: Using the applique directions below, iron spider head and eyes, and rat to quilt on Border C. Embroider line from web to spider using your favorite stitch.



Fabric Applique Instructions:

Using your inkjet printer, print out applique pattern pieces with Heat n Bond EZ Print Lite sheets or trace designs on Heat n Bond Lite iron-on adhesive.



Follow the package directions to iron adhesive pieces to wrong sides of desired fabrics. Let cool. Cut out applique pieces. Iron applique pieces on the right side of fabric block following package directions. Blanket stitch, straight stitch, or zig zag around all pieces.

*Tip: Ironing a light weight interfacing to wrong side of fabric block before adding applique can help stabilize the applique's shape. Also, with light colored applique pieces, ironing interfacing to the wrong side can help keep the design beneath them from showing through. Iron the adhesive right over the interfacing and apply appliques as you normally would.

Adding Deco Foil:

Thinly paint Deco Foil Liquid Adhesive onto desired areas. Let dry 30 minutes. Place desired color of Deco Foil over each adhesive area. Cover with parchment paper and press for 30 seconds on each piece. Wait an hour and then rub area with soft cloth and remove film from fabric.

Finishing the quilt:

Use your favorite method to finish quilt or here's an easy way to prep a quilt for either hand or machine quilting using Spray n Bond:

Protect the area you'll be using the Spray n Bond adhesive by placing an old sheet or paper under and around the area you'll be spraying. Place the quilt back right side down on your working surface. Using the Spray n Bond Adhesive, spray about a 6" section across the top portion on the wrong side of the fabric.

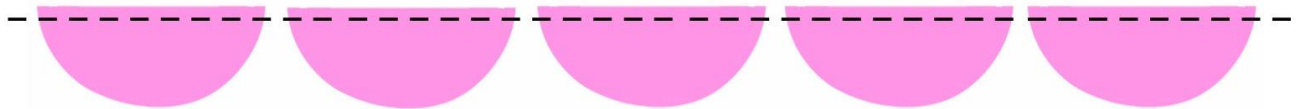
Place ThermOWeb Stitch n Sew Fleece Sew-in High Loft or batting on top of the wrong side of quilt back over the sprayed surface. Smooth fleece/batting to ensure it adheres to the sprayed fabric. Reposition as necessary. Continue this method of spraying just 6" at a time until you reach the bottom of the quilt back. Place quilt top on the unsprayed side of the fleece with right side of quilt facing up, wrong side facing fleece.

Using the same method used for the quilt back, spray 6" sections to adhere the quilt front to the fleece. Check both sides to make sure the quilt is smooth and there are no puckers or folds. This method works best with twin sized or smaller quilts.

Now the quilt is ready to be hand or machine quilted. Add binding using your favorite method and you are ready to use your quilt!

Making a fabric flower:

Cut five 2" circles for the small flower and ten 3" circles for the large flower. Fold circles in half. Run a basting stitch through the raw edges of the folded circle with one length of thread. I use embroidery thread to baste the halves—it's stronger than regular thread.

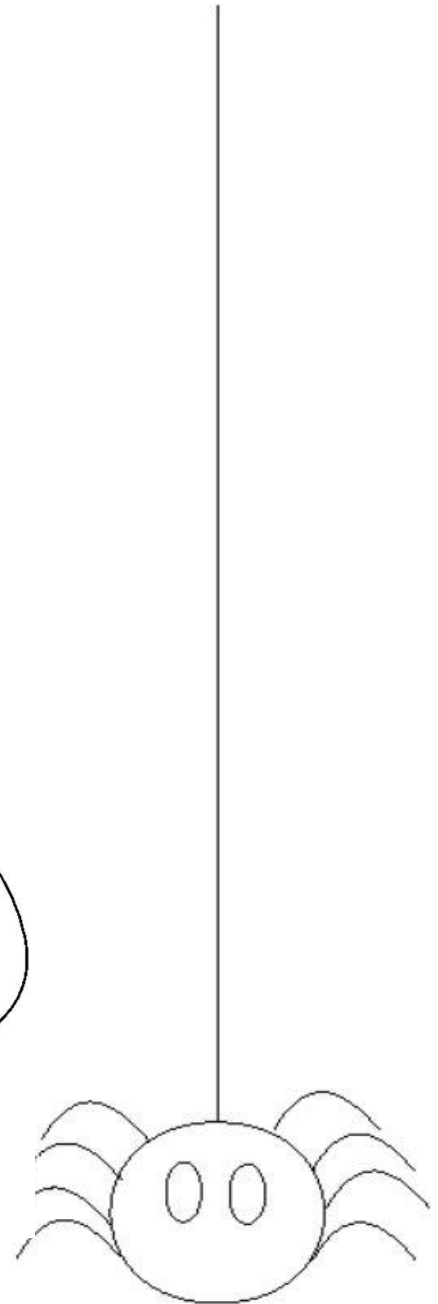
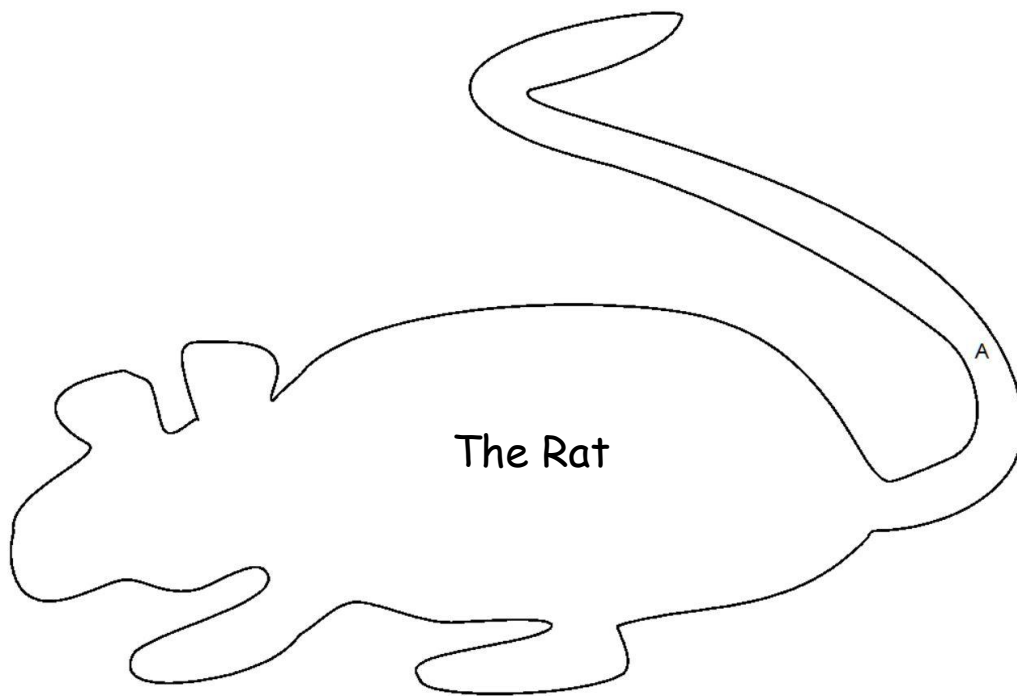
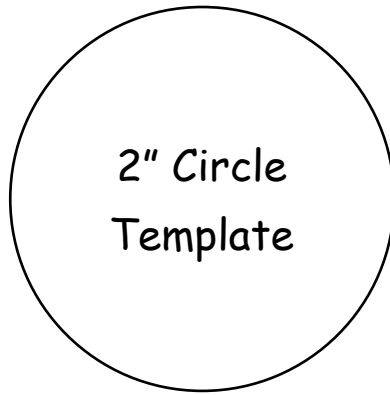
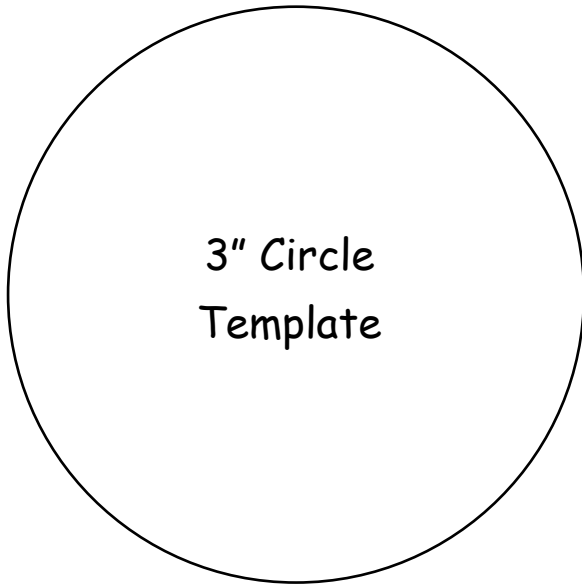


Pull the thread to gather the halves. Tack the first and last half circle together with a small stitch. Repeat the same process with the 2" halves.

Stitch the 2" flower on top of the 3" flower. Use Fabric Fuse to hold the flower in place. Add a button to finish the flower.



Templates:





The Web

The Spider

B

C

