

Creatin' in the Sticks



<http://createinthesticks.blogspot.com>

**Patterns for personal use only, please*

Cozy Teddy Bear and His Heart Pocket Pillow

Make a little heart pillow with a pocket to hold a sweet little cuddle bear.

finished size: Bear 9" tall/Heart pillow 14" x 13"



This pattern is provided for your personal use only and may not be reproduced, sold, or kitted without written permission
© Carla Henton – Creatin' in the Sticks
<http://createinthesticks.blogspot.com>
2017 all rights reserved

Cuddle Bear

Supplies:



HEATnBOND® FUSIBLE TRICOT SOFT STRETCH INTERFACING ¼ yd.

HEATnBOND® LITE SOFT STRETCH™ 1 ½" x 3"

STITCH n SEW STABILIZER: TEAR-AWAY 8" x 4"

Fabric:

¼ yd. pink and white fleece

1 ½" x 3" white fleece for inner ear appliques

Other supplies:

Pattern for bear and pillow –

Print the **FREE** PDF pattern by visiting [Creatin' in the Sticks pattern shop at Craftsy](#)

Aurifil 12 wt thread for embroidering eyes (or other embroidery floss)

Fiber fill (for stuffing)

24" of ½" ribbon for bow around the neck

2 pom-poms one -1" one- ¾" (please do not use if this is a gift for an infant)

Iron and pressing cloth

sewing machine

sewing thread and needle

sharp scissors

erasable pen

permanent marker

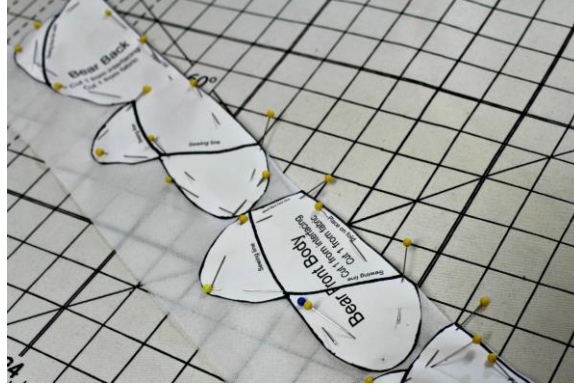
other general sewing supplies



Instructions:

Step 1

Cut out the pattern for the bear and cut out interfacing pieces.



Using a lot of pins will aid to stabilize while cutting because the HEATnBOND® FUSIBLE TRICOT SOFT STRETCH INTERFACING is very stretchy which will keep the bear very soft and cuddly while maintaining his shape. Once the interfacing is cut, fuse the interfacing pieces to the wrong side of the pink fleece.



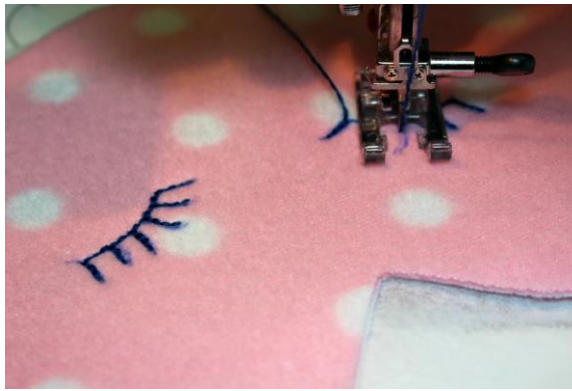
Use a damp pressing cloth to fuse the pieces for about 15 seconds with an iron set on the wool setting. Let the fabric cool then cut out pattern pieces from the fleece cutting around the fused interfacing.

Step 2

Mark the eyes on the bears face with an erasable pen using the pattern as a guide.



Place the face, right side up, on a piece of STITCH n SEW TEAR-AWAY STABILIZER and embroider the eyes by hand or stitch them on your sewing machine with Aurifil 12 wt. thread on top and 50 wt. thread in the bobbin.



Stitch over the eyes twice if doing it by machine.

This is a great way to give an embroidered effect with a sewing machine.

Trace the 2 inner ear pieces on the paper side of HEATnBOND® LITE SOFT STRETCH™ with a permanent marker and fuse to the wrong side of fabric following the package instructions. Cut them out and place on the bear face using the pattern as a guide. Bond the inner ear appliques to the bear face and stitch around the ear appliques.

Gently tear the tear-away stabilizer from the back of the bear face.

Step 3



Fold bear face in half with right sides together and pin from the nose down to the point as pictured to form a dart. Stitch a ¼" seam back stitching at beginning and end.



Turn right side out and hand sew 1 pom-pom (1") to the point for the nose using double thread.

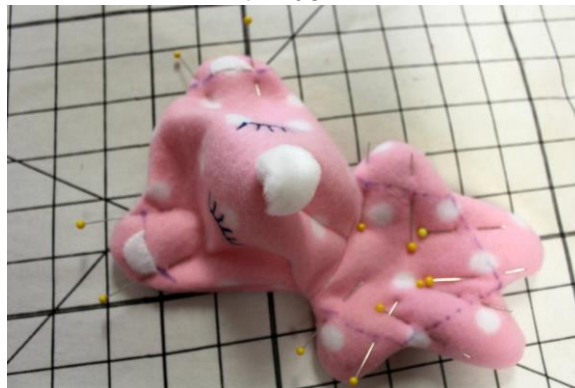


Find the center of the bear front body and pin the face to the body matching centers. Stitch the face to the body by sewing $\frac{1}{4}$ " across the neck from shoulder to shoulder backstitching at beginning and end.

Step 4



Pin bear front to bear back and stitch $\frac{1}{4}$ " around the bear leaving the space between the ears at the top of the head open for turning. Turn right side out and gently push arms, legs, and ears out. Mark stitching lines for arms, legs, and ears on the front of the bear using the pattern as a guide with an erasable marker. Lightly stuff the arm, legs, and ears with fiber fill.



Pin and stitch on marked lines on the outside of the body. Stuff the body and head of the bear and stitch the opening at the top of the head by turning under $\frac{1}{4}$ " and hand stitching it closed with a slip stitch.

Step 5

Stitch the $\frac{3}{4}$ " pom-pom to the bear's back for a tail using double thread. Tie the ribbon around the bears neck in a bow and take a couple of hand stitches to secure it.

Heart Pocket Pillow

Supplies:

SPRAYnBOND BASTING ADHESIVE

STITCH n SEW HI LOFT SEW-IN INTERFACING

Fabric:

½ yard Cuddle fabric (dot)

Other supplies:

Sewing Machine with a walking foot

thread

fiber fill

sewing thread and needle

sharp scissors

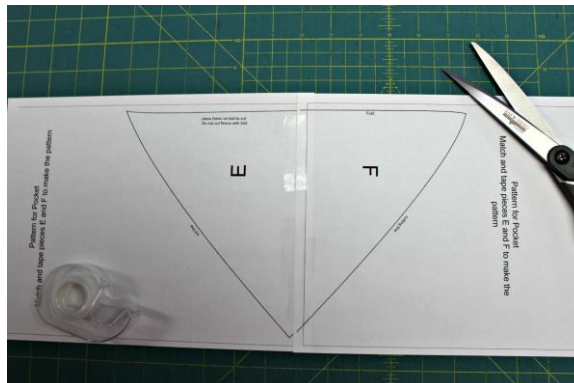
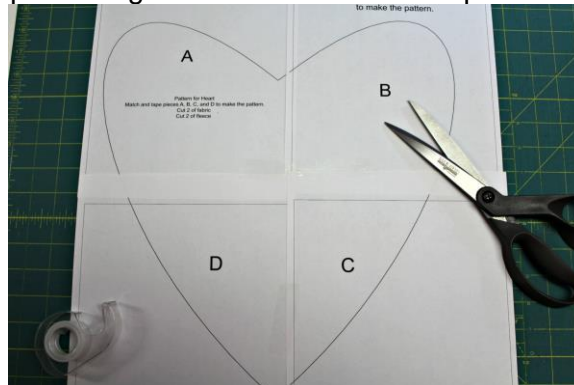
Protective paper for work surface (Freezer Paper)

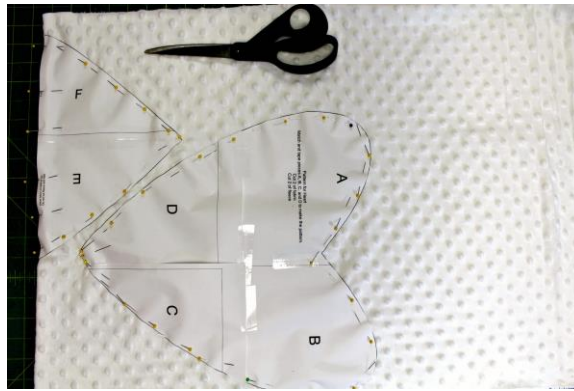
other general sewing supplies

Instructions:

Step 1

Print pattern and tape pieces together to make one heart pattern and one pocket pattern.

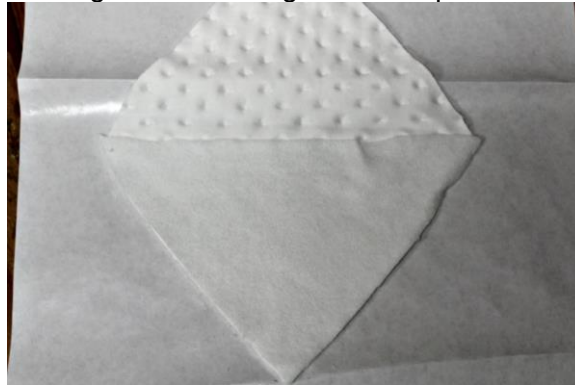




Pin heart pattern on cuddle fabric and cut out 2 hearts from cuddle fabric. Pin pocket pattern on fold and cut out one. Cut 2 hearts from the fleece and 1 pocket on a single layer of fleece.

Step 2

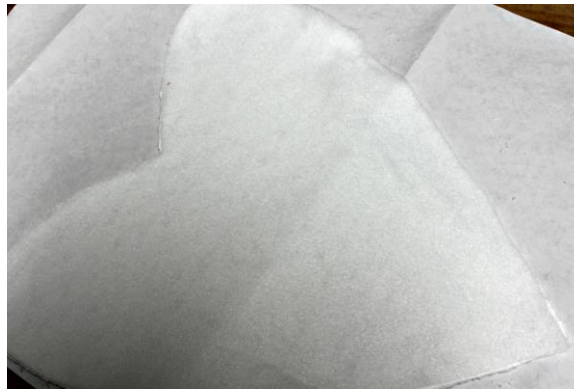
One way to sew with the stretchy cuddle fabric is to spray baste batting or fleece to the wrong side to keep the cuddle fabric from sliding and stretching out of shape. This will help with sewing this pillow.



Lay pocket cuddle fabric on protective paper right side down. Spray SPRAYnBOND BASTING ADHESIVE on half of the pocket. Lay the fleece pocket piece on top of the sprayed half of cuddle fabric and rub to make sure there are no wrinkles. Spray the top of the fleece and fold the other half of the cuddle pocket over the fleece. Press and rub to make sure there are no wrinkles.



Spray basting adhesive on the back of the 2 cuddle fabric hearts as was done with the pocket and adhere the 2 fleece hearts to the wrong sides.



Press and rub to make sure there are no wrinkles.

Step 3

Using a walking foot, stitch $\frac{1}{4}$ " from edge across the top of the pocket.



Lay the pocket on top of the right side of one of the fleece backed hearts and baste around the bottom of the heart $\frac{1}{4}$ " from the edge using a walking foot.

Step 4

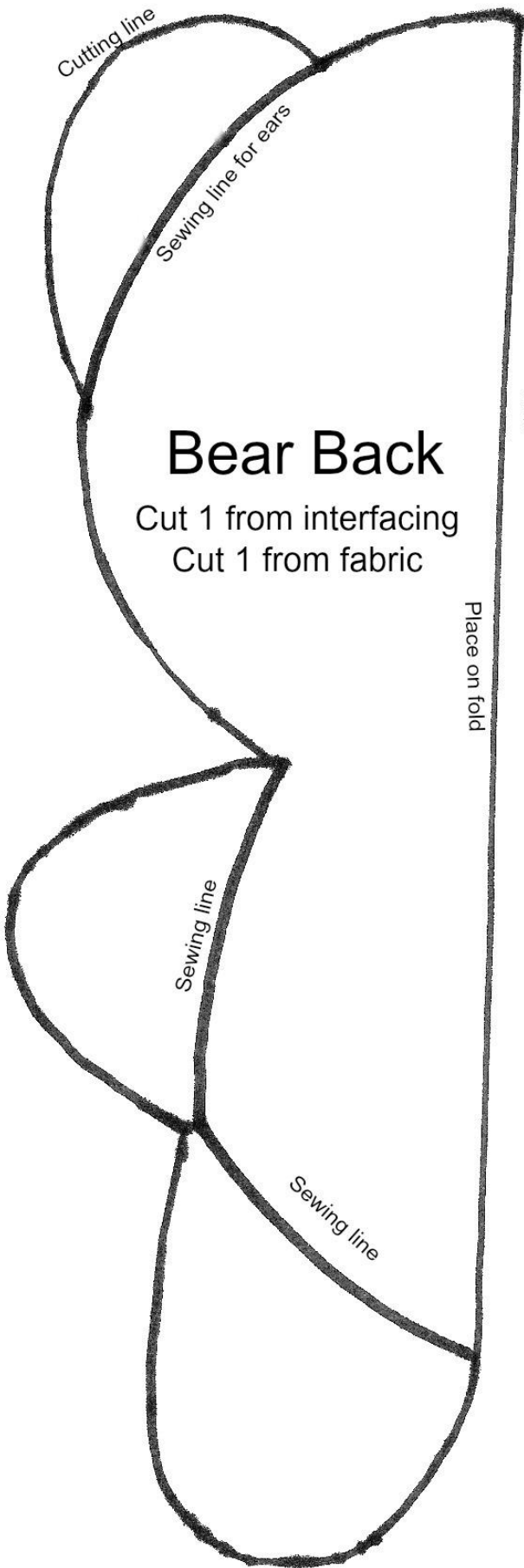
Pin both hearts right sides together. It will be a thick sandwich so a walking foot is a must for this one.



Stitch $\frac{1}{2}$ " from edge all around the heart leaving a 3" opening for turning. Clip curves and turn right side out. Gently push the point and curves out and fill the heart with fiber fill. Stitch the opening closed with a slip stitch.



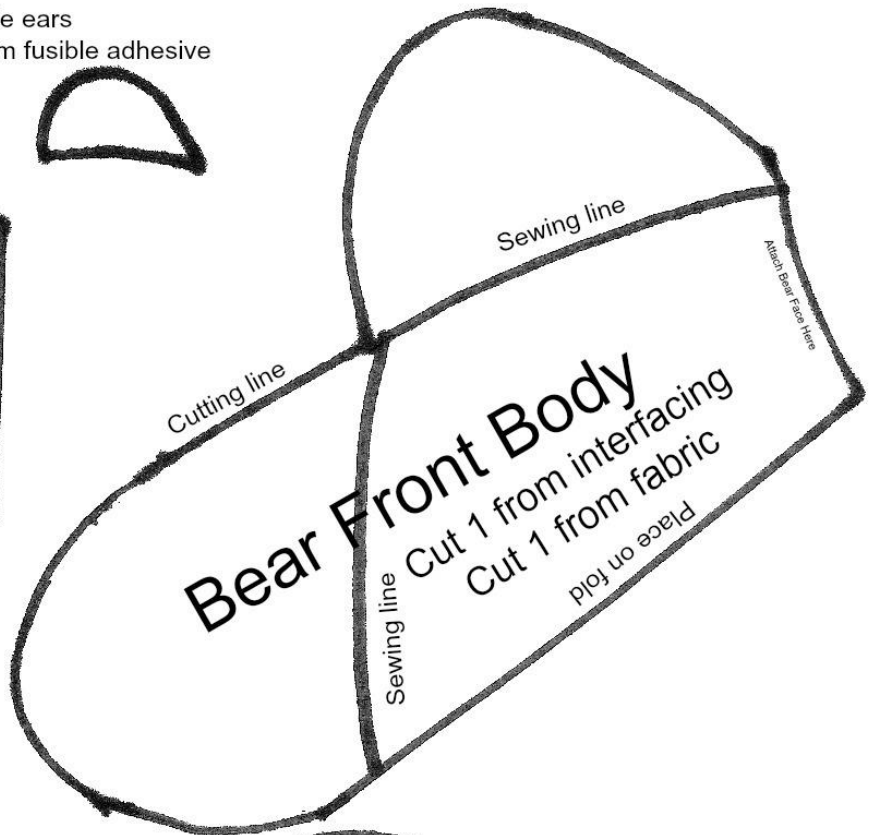
inside ears
cut 1 of each from fusible adhesive



Bear Back

Cut 1 from interfacing
Cut 1 from fabric

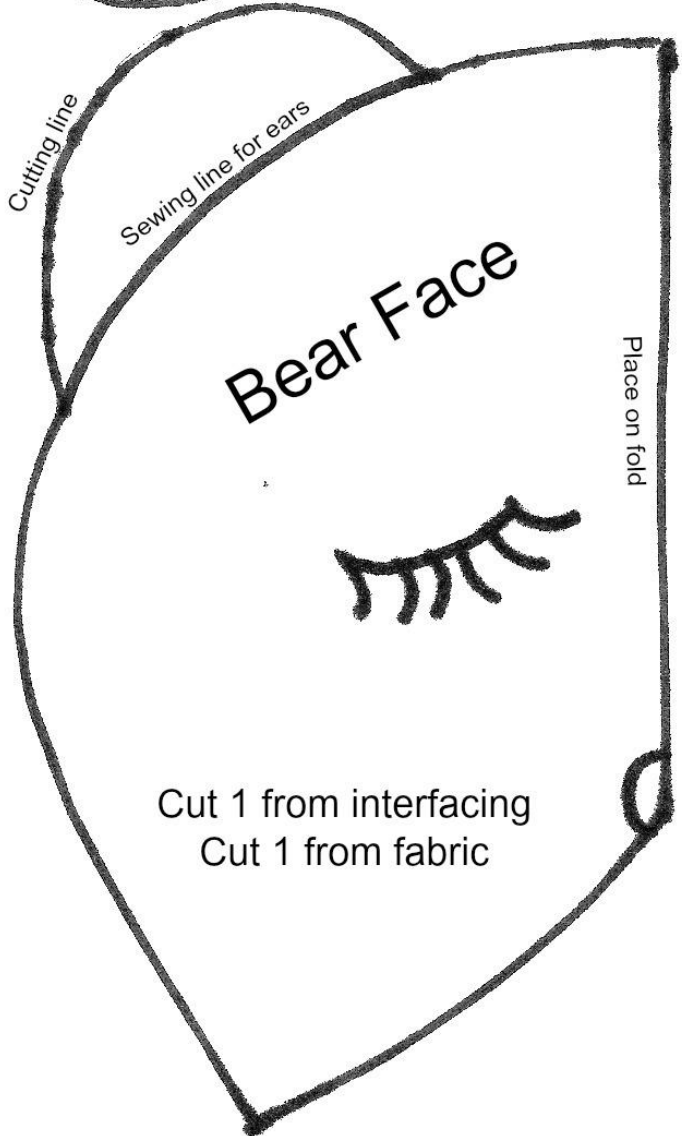
Place on fold



Bear Front Body

Cut 1 from interfacing
Cut 1 from fabric

Attach Bear Face here



Bear Face

Cut 1 from interfacing
Cut 1 from fabric

Place on fold

A large, irregularly shaped pattern labeled 'A'. The shape is roughly heart-shaped, with a rounded top and a pointed bottom. The right side of the shape is more complex, with a small notch or indentation. The pattern is drawn with a solid black line on a white background.

A

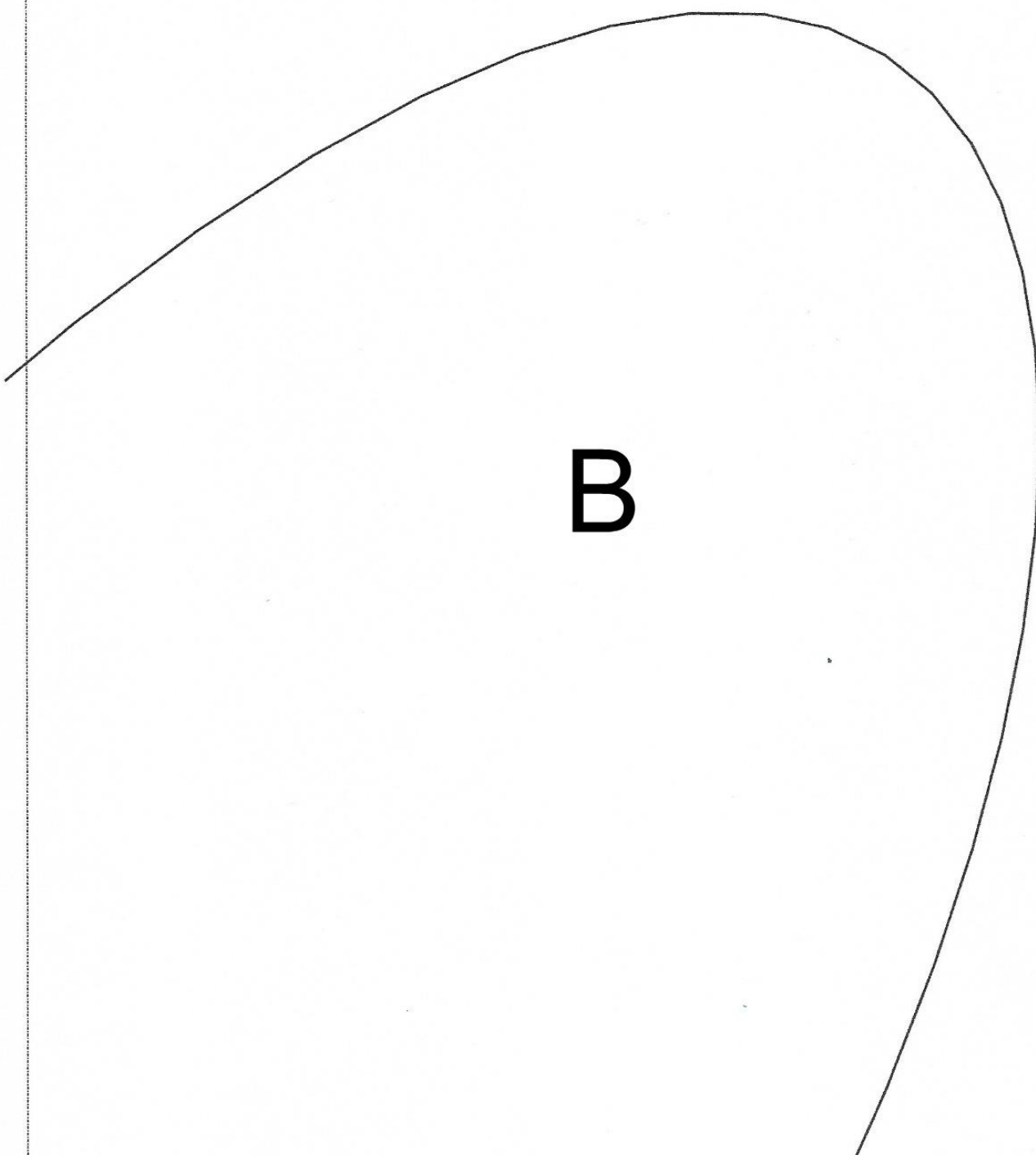
Pattern for Heart

Match and tape pieces A, B, C, and D to make the pattern.

Cut 2 of fabric

Cut 2 of fleece

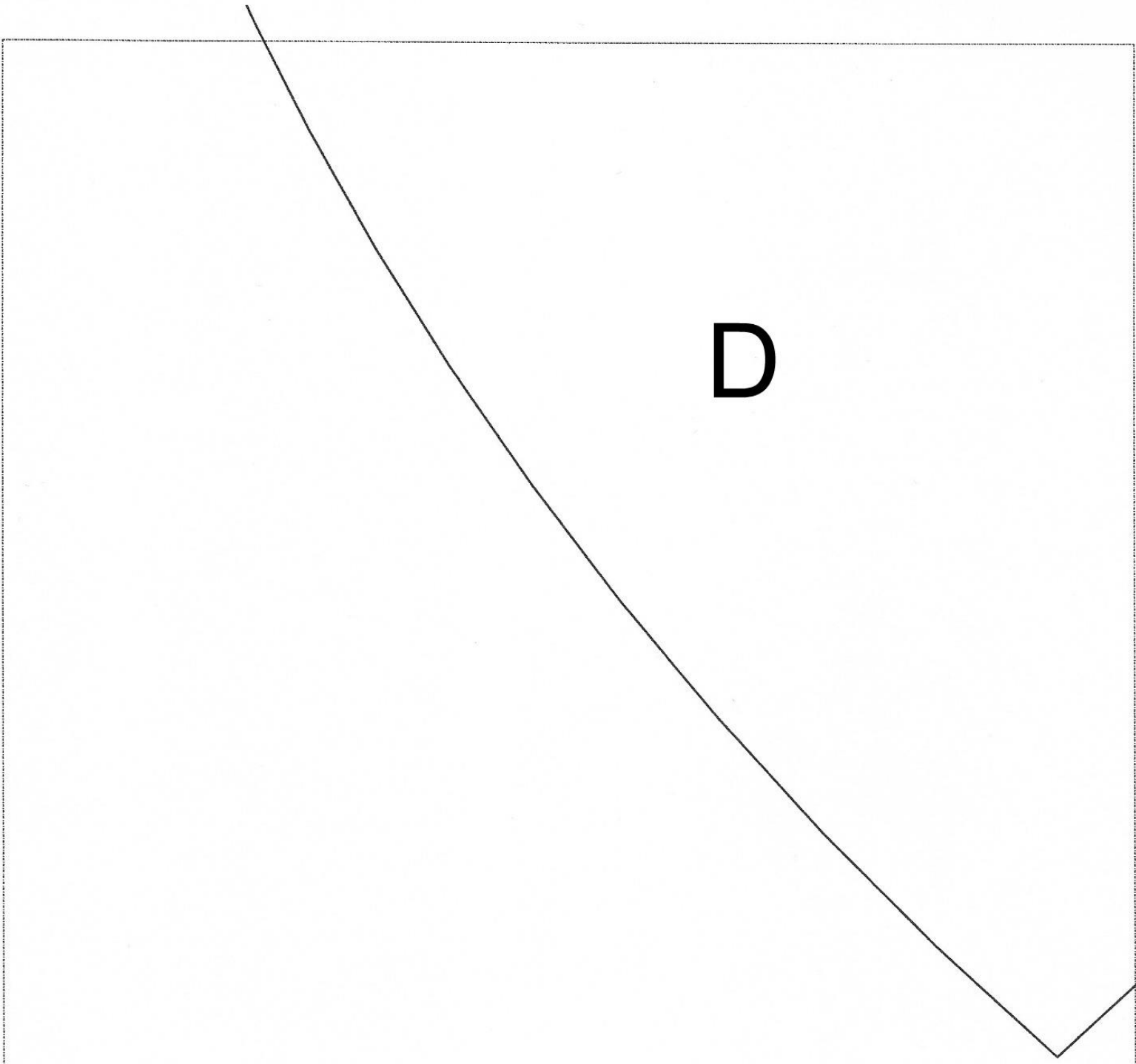
Pattern for Heart
Match and tape pieces A, B, C, and D
to make the pattern.





C

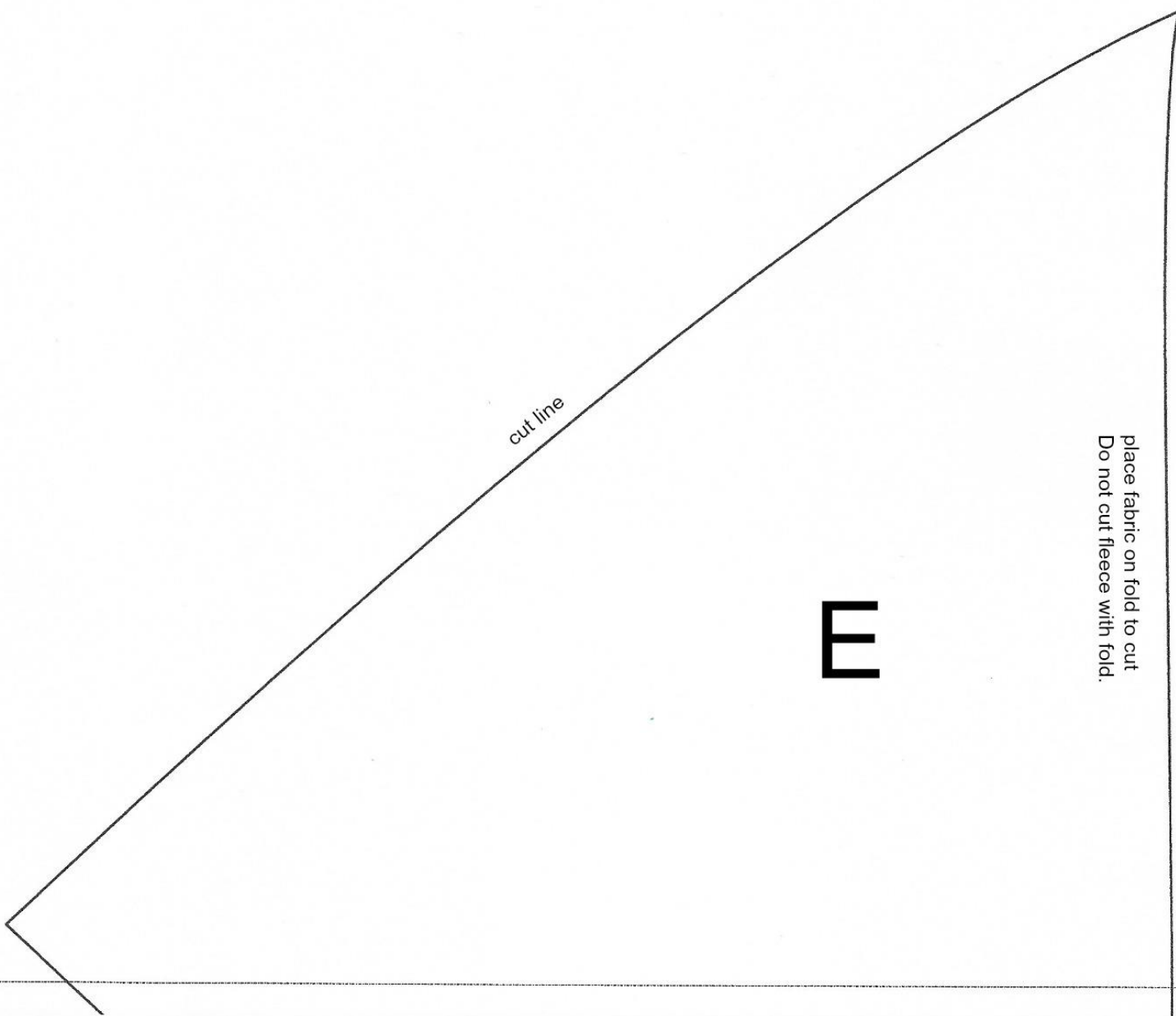
Pattern for Heart
Match and tape pieces A, B, C, and D
to make the pattern.



Pattern for Heart
Match and tape pieces A, B, C, and D

Pattern for Pocket

Match and tape pieces E and F to make the pattern



cut line

E

place fabric on fold to cut
Do not cut fleece with fold.

Pattern for Pocket
Match and tape pieces E and F to make the
pattern

